

DOUGHNUT TIME



DOUGHNUT TIME

Doughnut Time has a simple ethos: small batch, handmade doughnuts that are free from trans-fat and preservatives. There is a constantly evolving menu.

This fun approach has made Doughnut Time one of the most popular food destinations.

Locations



SHAFTESBURY AVENUE



SHOREDITCH OLD STREET



NOTTING HILL



LONDON CITY AIRPORT



VICTORIA



WESTFIELD STRATFORD



OLD ST POP-UP

Digital Overview

FACEBOOK

- 10 weekly posts.
- 2,000 views on each post.

INSTAGRAM

- 43,000 followers.
- 8 million impressions.
- 420,000 engagements on posts.
- 21 posts every week.
- 300,000 actions every week.

FEATURED BY:

FREE METRO **BuzzFeed**

EveningStandard. **COSMOPOLITAN**

INDEPENDENT

CRUMMBS

THE HANDBOOK

SHEERLUXE

**SECRET
LONDON**



"Doughnut Time has had the most efficient viral marketing on Instagram that I've ever seen."
- Zomato (@ThatSeriousBirt)

"It literally could not be any simpler to go nuts for doughnuts."
- SECRET LONDON



Shaftesbury Avenue

OPENED OCTOBER 2017

- Flagship
- Line extending through Soho.
- Media and blogger attendance all day.
- Live social media coverage throughout the launch day.
- Total media reach: 394,000,000 people.



Shoreditch - Old Street

OPENED DECEMBER 2017

- Over 1,000 people in attendance.
- Media and blogger attendance all day.
- Total media reach: 13,000,000 people.

TimeOut
London
HOT DINNERS

SKINT LONDON
Play More, Pay Less!

CRUMMBS

SECRET LONDON

THE HANDBOOK

urban INTENTION

LONDON THE INSIDE

SHEERLUXE

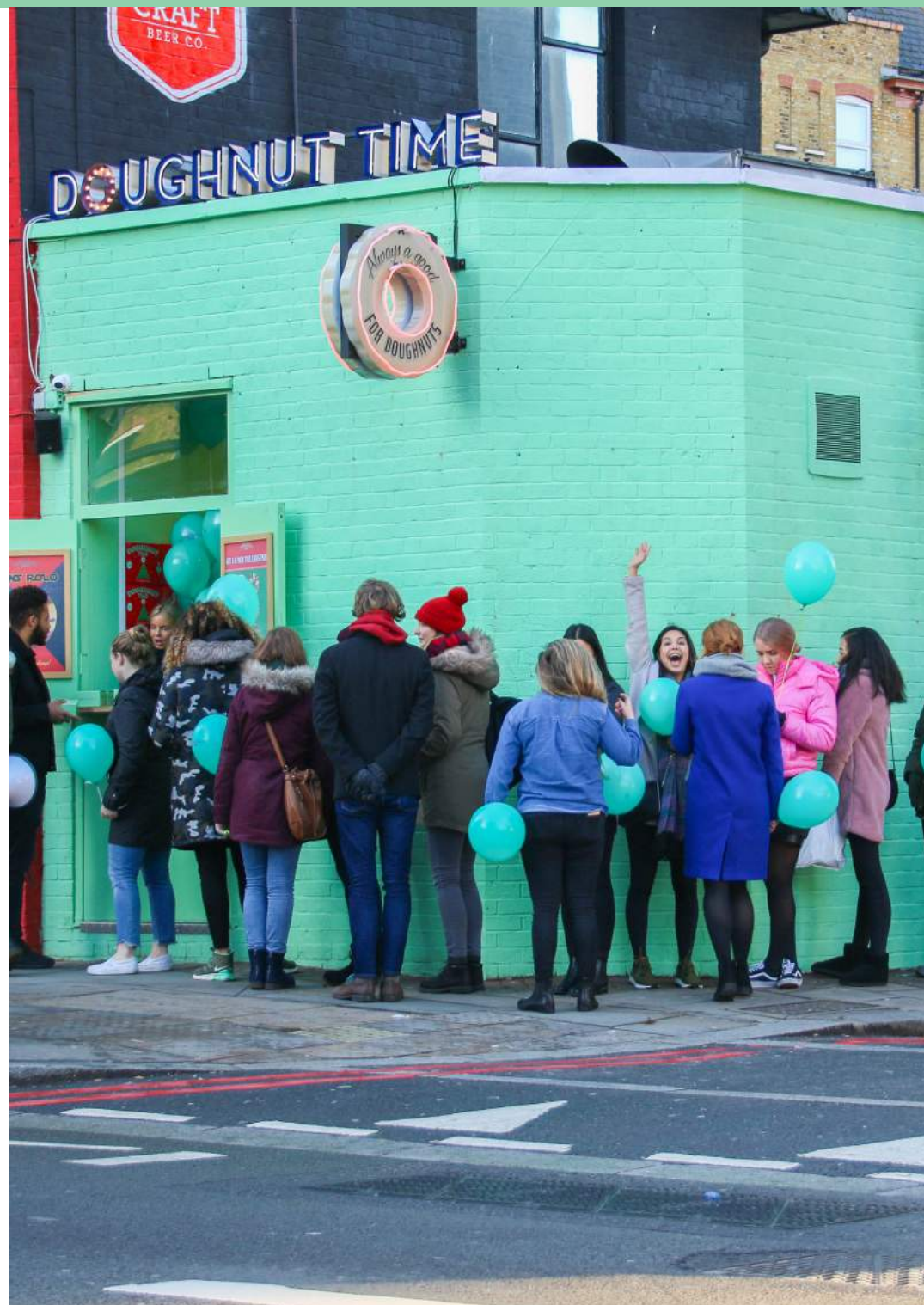
Time Out London
@TimeOutLondon

Want free doughnuts? Of course you do. Here's where to get them, plus five other deliciously costless ideas.
timeout.com/london/news/si...

3:00 am - 15 Dec 2017

7:01 am - 12 Dec 2017

5 followers 15 likes



Notting Hill

OPENED JANUARY 2018

- Over 2,000 people in attendance.
- Total media reach: 42,000,000 people.

London
Evening Standard **FOOD**

IN THE HANDBOOK



**URBAN
INTENTION**

HELLO!

**LONDON
THE INSIDE**



Requirements

LOCATION

- West End
- Canary Wharf
- East London
- Camden
- Kings Cross
- Carnaby Street
- Oxford Street
- Liverpool Street Station
- Victoria Station
- Bond Street
- Islington or Angel
- South Ken Station
- Camden
- Covent Garden
- Brick Lane
- Knightsbridge
- Chelsea/ Sloane Square
- London Bridge
- Borough Market
- Fitzrovia
- High St Kensington
- Shepherds Bush
- Hammersmith
- Battersea
- Clapham
- Fulham
- Richmond
- Wimbledon

A1 Retail

All products prepared in central production kitchen.

Delivered to store daily.

No cooking on site.

Long and short term options considered.

Stations, airports, universities and high footfall locations in major cities across the UK, close to other premium A1 food.

Please contact our retained property advisor

Richard Wassell

richard.wassell@twentyretail.com

0207 198 8888

07971 556 041



twentyretail